



BENEFICIAL USE OVERVIEW & the INFLUENCE OF FUNDING STREAMS

Jeff Corbino
Operations Division
New Orleans District
U.S. Army Corps of Engineers

June 23, 2026



Year 12 Post Construction - Calcasieu SNWR B.U. Site



U.S. ARMY



**US Army Corps
of Engineers®**



Topics

District Beneficial Use Stats
RE: the “70% by 2030” Goal

Color-of-Money Contrasts in
Beneficial Use Strategies

Ecological Advantages of O&M
Unconfined Placement



U.S. ARMY



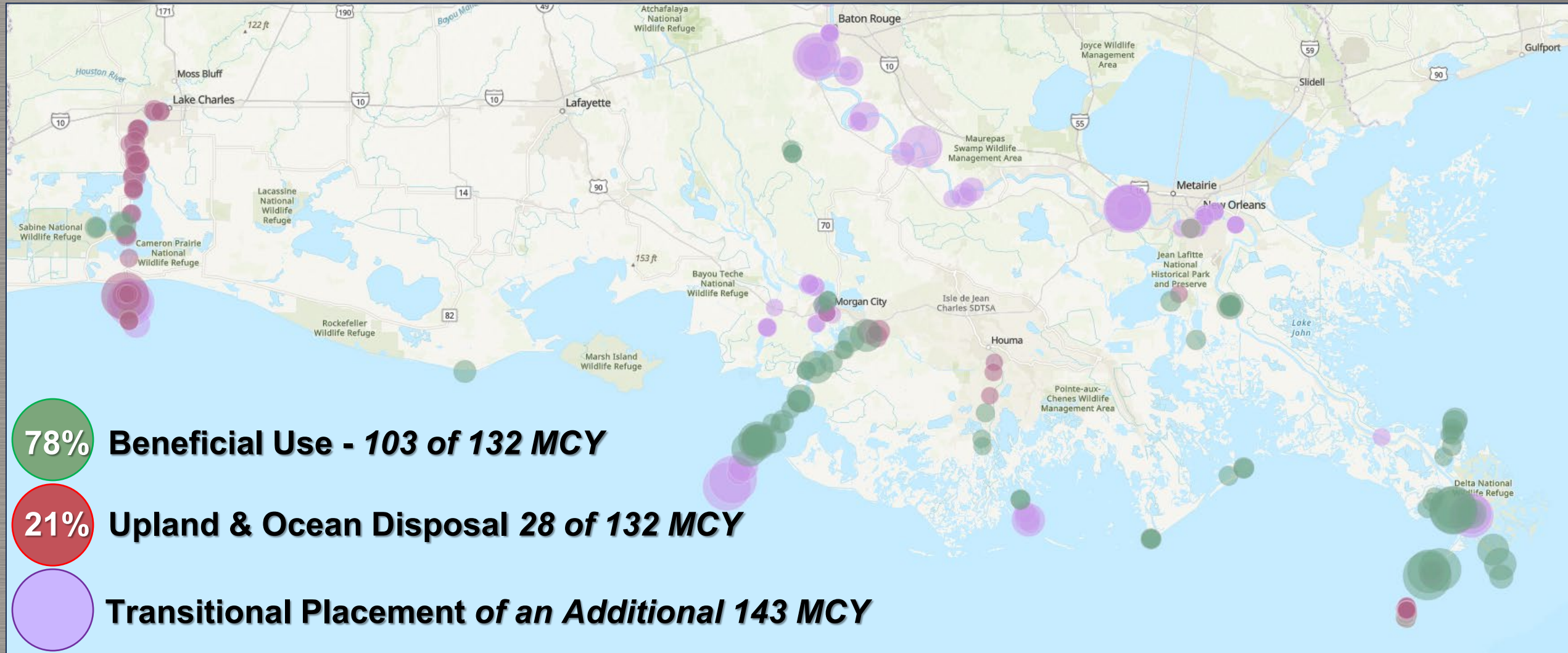
US Army Corps
of Engineers®

Year 10 Post Construction – Mississippi DNWR B.U. Site



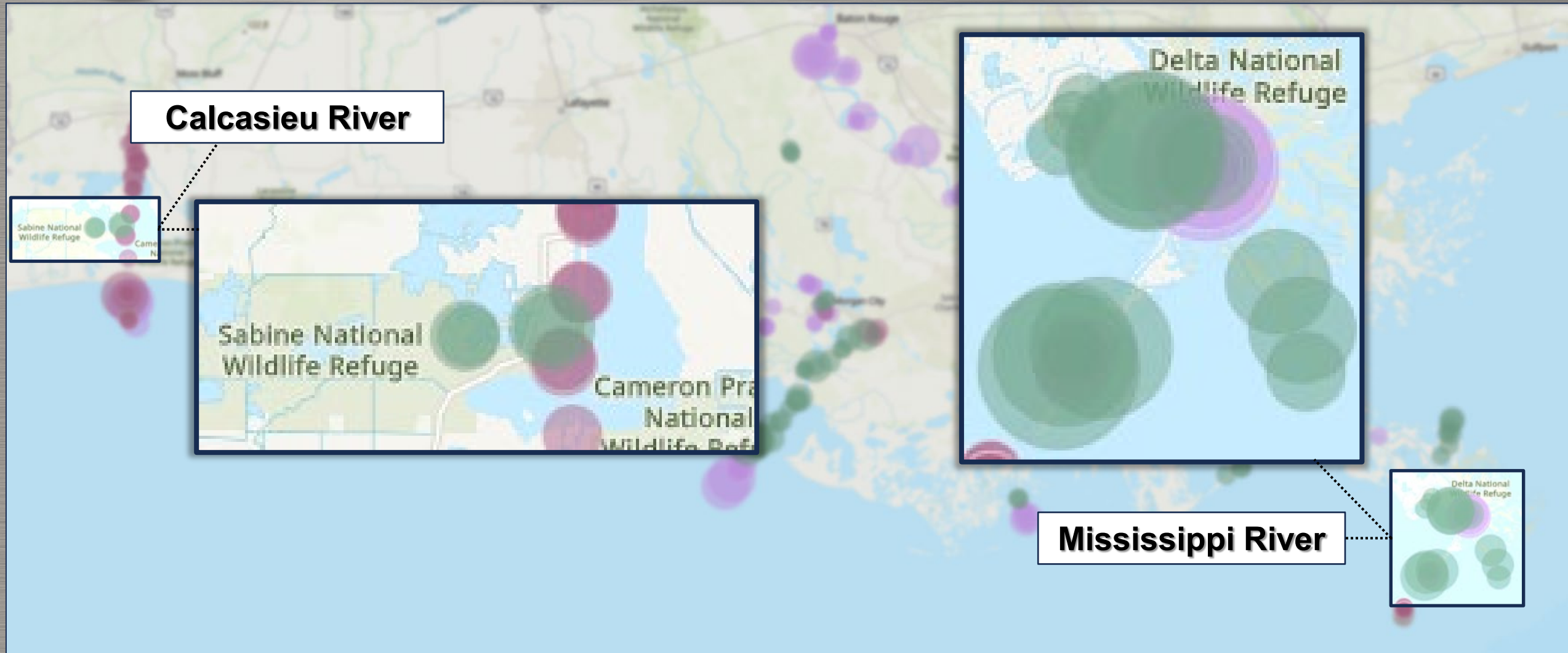
Dredged Material Placement Statistics

RSM Data Viewer 2022 through 2025





Calcasieu River vs. Mississippi River Contrasting Beneficial Use Strategies





Beneficial Use on the Calcasieu River

Base Plan is Upland Disposal

Beneficial Use Relies on Partnerships for Incremental Cost above Base

4,450 Acres Created b/t 1983 & 2025

Wildly Popular w/ Agencies;
Extends Useful Life of Confined Disposal Facilities



U.S. ARMY



US Army Corps of Engineers®





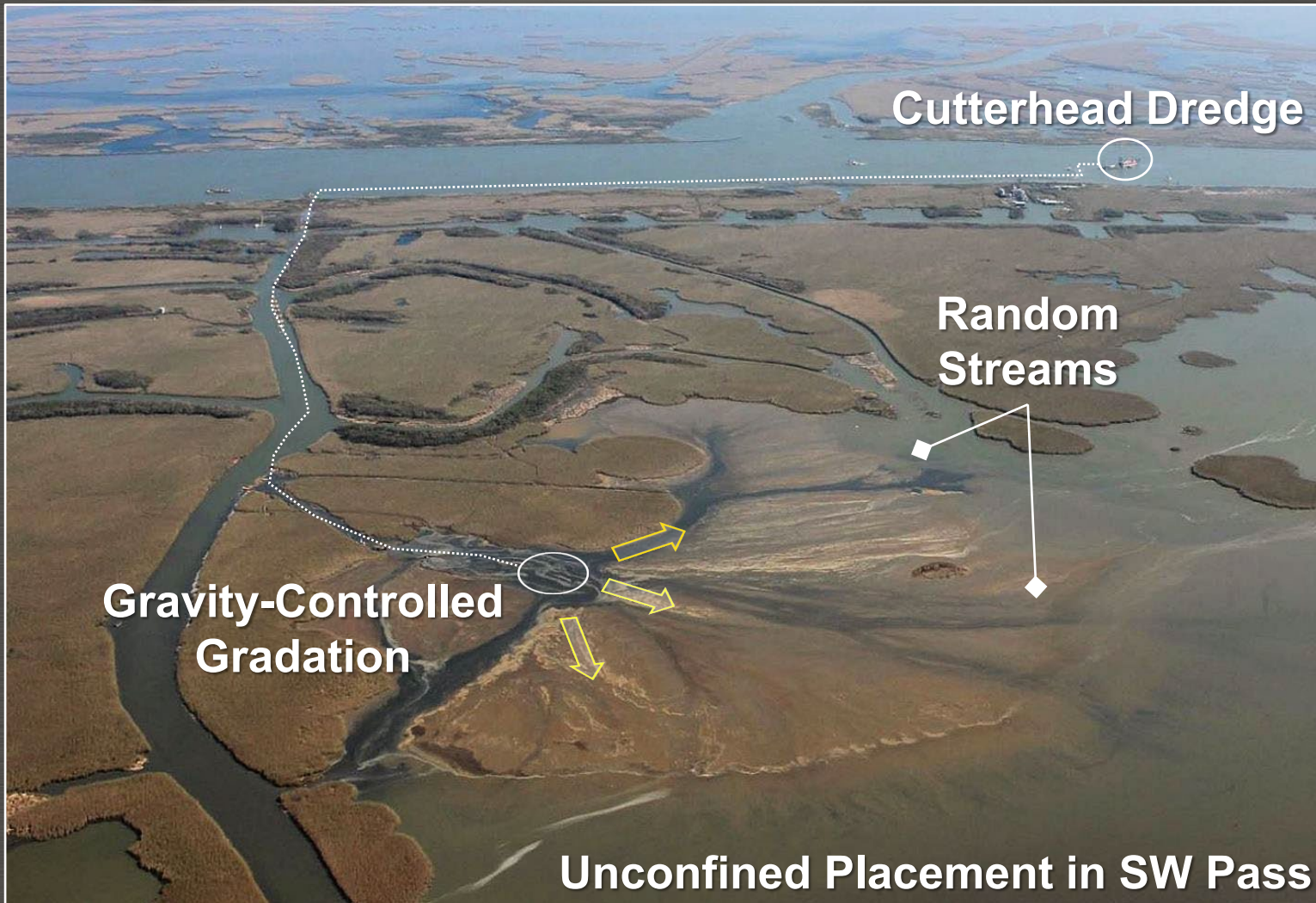
Beneficial Use on the Mississippi River

Base Plan Calls for Cutterhead Beneficial Use

**Fully Funded thru O&M;
Informal Engagement w/
Land Managers**

**Land Gain Often Exceeds
1,000 Acres Annually,
Outpaces Local Land Loss**

**Practice Began in
Early 1900s to
Extend Banks Gulfward**

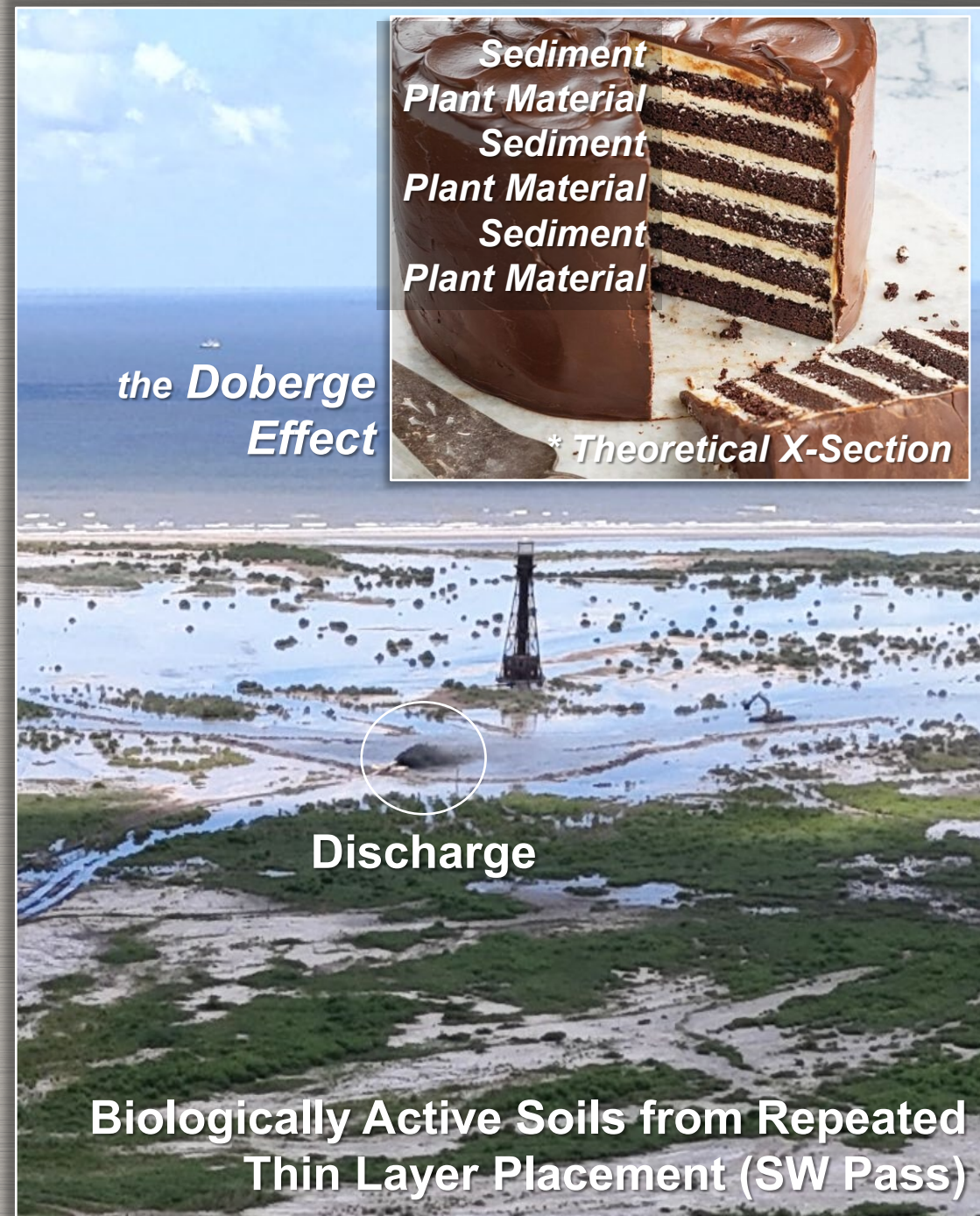




Ecological Advantages of Unconfined Discharge



Full Tidal Connection & Complex Edges (West Bay)



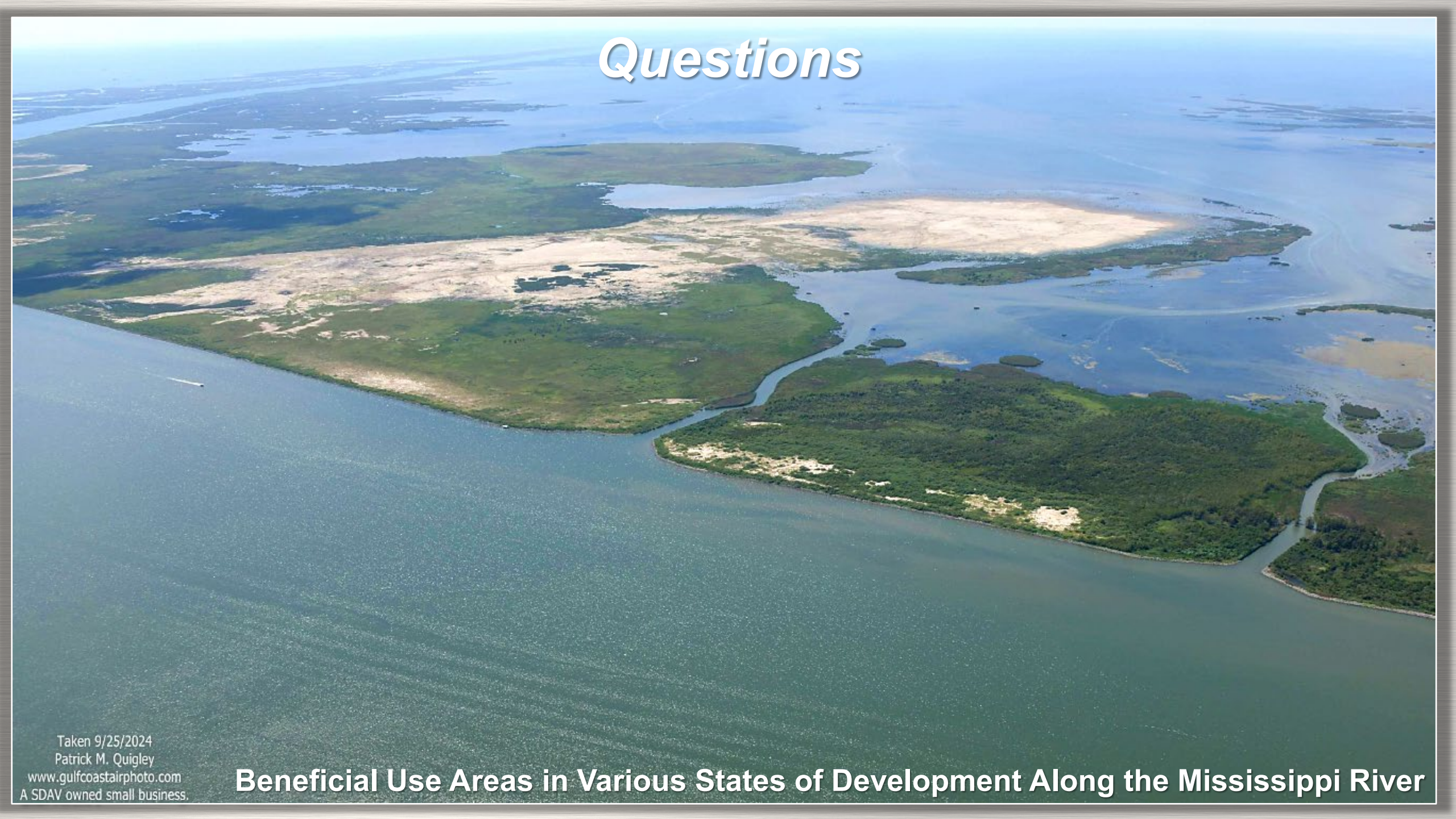
the Doberge Effect



Discharge

Biologically Active Soils from Repeated Thin Layer Placement (SW Pass)

Questions



Taken 9/25/2024
Patrick M. Quigley
www.gulfcoastairphoto.com
A SDAV owned small business.

Beneficial Use Areas in Various States of Development Along the Mississippi River